

RESEARCH

Open Access



# Predictive value of computed tomography with coronal reconstruction in right hemicolectomy with complete mesocolic excision for right colon cancers: a retrospective study

Hui Yu<sup>\*†</sup> , Yong Zhuang, Jinliang Jian and Chunkang Yang<sup>†</sup>

## Abstract

**Background:** Understanding the vascular anatomy is critical for performing central vascular ligation (CVL) in right hemicolectomy with complete mesocolic excision (CME). This study aimed to investigate the predictive value of multi-slice spiral computed tomography (MSCT) with coronal reconstruction in right hemicolectomy with CME.

**Methods:** This is a retrospective descriptive study. Eighty patients with right colon cancer who underwent right hemicolectomy from December 2015 to January 2020 were included. The intraoperative reports (including imaging data) and MSCT images with coronal reconstruction were analysed and compared. The detection rates of the ileocolic vein (ICV) and ileocolic artery (ICA) roots and the accuracy in predicting their anatomical relationship were analysed. The detection rate and accuracy in predicting the location of the gastrocolic trunk of Henle (GTH), middle colic artery (MCA) and middle colic vein (MCV) were analysed. The distance from the ICV root to the GTH root (ICV-GTH distance) was measured and analysed. The maximum distance from the left side of the superior mesenteric artery (SMA) to the right side of the superior mesenteric vein (SMV), named the 'IsSMA-rsSMV distance', was also measured and analysed.

**Results:** In seventy-four (92.5%) patients, both the ICV and ICA roots were located; their anatomical relationship was determined by MSCT, and the accuracy of the prediction was 97.2% (72/74). The GTH was located by MSCT in 75 (93.7%) patients, and the accuracy of the prediction was 97.33% (73/75). The MCA was located by MSCT in 47 (58.75%) patients, and the accuracy was 78.72% (37/47). The MCV was located by MSCT in 51 (63.75%) patients, and the accuracy of the prediction was 84.31% (43/51). The ICV-GTH distance was measured in 73 (91.2%) patients, and the mean distance was  $4.28 \pm 2.5$  cm. The IsSMA-rsSMV distance was measured in 76 (95%) patients, and the mean distance was  $2.21 \pm 0.6$  cm.

\* Correspondence: [h4ride@163.com](mailto:h4ride@163.com)

<sup>†</sup>Hui Yu and Chunkang Yang contributed equally to this work.

Department of Gastrointestinal Surgical Oncology, Fujian Cancer Hospital & Fujian Medical University Cancer Hospital, 420 Fuma Street, Jinan, Fuzhou, Fujian 350014, P.R. China



© The Author(s). 2021 **Open Access** This article is licensed under a Creative Commons Attribution 4.0 International License, which permits use, sharing, adaptation, distribution and reproduction in any medium or format, as long as you give appropriate credit to the original author(s) and the source, provide a link to the Creative Commons licence, and indicate if changes were made. The images or other third party material in this article are included in the article's Creative Commons licence, unless indicated otherwise in a credit line to the material. If material is not included in the article's Creative Commons licence and your intended use is not permitted by statutory regulation or exceeds the permitted use, you will need to obtain permission directly from the copyright holder. To view a copy of this licence, visit <http://creativecommons.org/licenses/by/4.0/>. The Creative Commons Public Domain Dedication waiver (<http://creativecommons.org/publicdomain/zero/1.0/>) applies to the data made available in this article, unless otherwise stated in a credit line to the data.

**Conclusions:** With its satisfactory accuracy in predicting and visualising the information of key anatomical sites, MSCT with coronary reconstruction has some predictive value in CME with CVL in right hemicolectomy.

**Keywords:** Colonic neoplasms, Right hemicolectomy, Computed tomography, Vascular anatomy, Central vascular ligation, Complete mesocolic excision

## Background

Since the concept of complete mesocolic excision (CME) was introduced for the surgical treatment of colon cancer, patients who undergo these procedures have achieved lower 5-year local recurrence rates (from 6.5 to 3.6%) and better 5-year cancer-related survival rates (from 82.1 to 89.1%) [1]. After promising results were reported, more centres began to adopt CME as a standard procedure for colon cancer surgery [2–4].

It is important to note that CME should be performed under the principle of central vascular ligation (CVL), which includes nearly full-length skeletonisation of the superior mesenteric vessels during right hemicolectomy, and this procedure was considered an extended dissection according to S. Toyota's research [5] and the Japanese Society for Cancer of the Colon and Rectum (JSCCR) guidelines [6]. Compared to D3 resection, CME with CVL appears to facilitate the retrieval of longer specimens and more mesentery and nodal nodes, but the differences in long-term outcome between these procedures are still not clear [7].

Typically, right hemicolectomy can be performed through the following different approaches: cephalic approach, caudal approach, and central approach. Amongst these approaches, the central approach is usually considered the most consistent with the principle of radical tumour resection, which first requires dissection and ligation of the vessel roots in the superior mesenteric vascular region. However, due to the vascular variations in the superior mesenteric region [8–11], it is difficult for surgeons to expose the vessel roots and dissect lymph nodes in the CVL region during surgery. A lack of proper understanding of the vascular anatomy and central vascular ligation region might lead to intraoperative injury, bleeding and inadequate lymph node clearance and increases the difficulty of performing CME with CVL [12, 13].

Therefore, methods for predicting the critical anatomical sites of colon cancer before the operation have become an area of interest for surgeons [14, 15]. Surgeons and radiologists have tried to predict vascular anatomical variations with multidetector computed tomography (MDCT) angiography and three-dimensional CT (3D-CT), which have been reported to have high sensitivity, specificity, accuracy and reliability [16, 17].

However, preoperative MDCT angiography and 3D-CT are not commonly used, partly due to concerns of

possible additional radiation exposure [18, 19], technical limitations and increased costs in some centres. More importantly, due to the lack of anatomical information apart from the blood vessels seen on angiographic images, these techniques cannot provide surgeons with an excellent visual prediction of the lymph node dissection regions, such as the range and size of the CVL region and its relationship with other anatomical structures, which is important in surgery [16, 17].

In this study, we attempted to use multi-slice spiral computed tomography (MSCT) with a coronal reconstruction technique to assess the vascular anatomy and CVL region that need to be explored during right hemicolectomy with CME.

## Materials and methods

This is a retrospective descriptive study. The study was approved by the ethics committee of Fujian Cancer Hospital & Fujian Medical University Cancer Hospital (ethical approval number: K2020-035-01). This study was carried out following the World Medical Association's Code of Ethics (Helsinki Declaration).

The patient information, intraoperative reports and raw MSCT data of 80 patients with right colon cancer who underwent right hemicolectomy at Fujian Cancer Hospital & Fujian Medical University Cancer Hospital from December 2015 to January 2020 were collected from medical documents and databases.

## Inclusion and exclusion criteria

The inclusion criteria were as follows: right-sided colon cancer treated with right hemicolectomy; plain abdominal and pelvic and contrast-enhanced triple-phase MSCT scans performed before the operation, and original data that was available for reconstruction. The exclusion criterion was as follows: intraoperative reports (including imaging data) not available to assess the anatomy of the ileocolic vein (ICV), ileocolic artery (ICA), gastrocolic trunk of Henle (GTH), middle colic artery (MCA) and middle colic vein (MCV).

The details of the MSCT scan and coronal reconstruction technique are as follows: plain abdominal and pelvic and contrast-enhanced triple-phase MSCT scans were performed preoperatively with a high-speed 256-slice spiral CT scanner (Brilliance iCT, Philips Medical Systems (Cleveland) Inc., Cleveland, USA). After the patient practised deep breathing, a breath-hold scan ranging

from the diaphragm to the lower edge of the pubic symphysis was performed with a 0.6 mm per slice thickness. The contrast agent used was ioversol (320 mg/mL, 1.2–1.5 mL/kg; injection flow rate, 3.0 mL/s). The arterial phase image was acquired 30 s after the injection. The portal phase image was acquired 70 s after the injection. The delayed phase image was acquired 240 s after the injection. The scanning parameters were as follows: tube voltage, 120 kV; automatic tube current and 0.5 s/r ball tube speed.

The original data of the portal phase scan were extracted and reconstructed in the coronal plane by multiplanar reconstruction (MPR) and maximum intensity projection (MIP) techniques. MSCT data coupled with the coronal reconstructed images were used to locate the roots of the ICV, ICA, GTH, MCA and MCV, the right side of the superior mesenteric vein (SMV) and the left side of the superior mesenteric artery (SMA) (with software from Philips IntelliSpace Portal v4.0.4.10004, Phillips Healthcare Nederland B.V.).

#### Analysis, measurements and calculations

The analysed data were compared with the intraoperative reports to evaluate accuracy. The anatomical relationship between the ICV and ICA was analysed on coronal and axial images with the software's positioning function. The location of the GTH relative to the pancreas and ICV was compared with the intraoperative findings to determine the accuracy of the prediction. To gain further insight into the extent of the CVL region, we designed several measures. The straight-line distance from the ICV root to the GTH root (ICV-GTH distance) was measured, and the maximum distance from the left side of the SMA to the right side of the SMV (lsSMA-rsSMV distance) was also measured. Then, the means of the ICV-GTH distance and the lsSMA-rsSMV distance were analysed.

#### Statistical analysis

Descriptive statistical methods were used. Statistical analysis was performed using SPSS 25.0 (IBM, Chicago). The accuracy of each prediction is represented as a rate. The distances are represented by the mean and standard deviation.

#### Results

The patients ranged from 15 to 87 years of age and included 42 males and 38 females with BMIs ranging from 16.0 to 29.1; there were 10 caecum cancers, 46 ascending colon cancers, 14 hepatic flexure cancers and 10 proximal transverse colon cancers. All patients were operated on through the central approach. The ICV, ICA, GTH, MCV and MCA roots were exposed step-by-step during the operation to determine their positions and relative

relationships, and these were recorded in the intraoperative report for comparisons (Table 1).

The MSCT data of 80 patients were reconstructed and analysed as required. In 74 (92.5%) of the 80 patients, MSCT with coronal reconstruction was able to locate the ICV and ICA roots and determine their anatomical relationship, and these findings were confirmed by the intraoperative findings in 72 patients, so the accuracy was 97.2% (72/74). The location of the GTH relative to

**Table 1** Patient and tumour characteristics (n = 80)

	n (%)
Age median/range (years)	59 (15–87)
Sex	
Male	42 (52.5%)
Female	38 (47.5%)
BMI (mean ± SD, range)	22.5 ± 3.1 (16.0–29.1)
Tumour site	
Caecum	10 (12.5%)
Ascending colon	46 (57.5%)
Hepatic flexure	14 (17.5%)
Proximal transverse colon	10 (12.5%)
pT category <sup>a</sup>	
Tis	3 (3.75%)
T1	4 (5%)
T2	7 (8.75%)
T3	40 (50%)
T4	26 (32.5%)
pN category <sup>a</sup>	
pN0	37 (46.25%)
pN1	33 (41.25%)
pN2	10 (12.5%)
pM category <sup>a</sup>	
M0	69 (86.25%)
M1	11 (13.75%)
Stage	
Stage 0	3 (3.75%)
Stage I	8 (10%)
Stage II	23 (28.75%)
Stage III	35 (43.75%)
Stage IV	11 (13.75%)
Surgical approach	
D2 dissection	4 (5%)
CME	65 (81.25%)
Multivisceral resection	7 (8.75%)
Palliative operation	4 (5%)

<sup>a</sup>According to the 8th edition of the American Joint Committee on Cancer (AJCC) staging system [20]

**Table 2** Results

	n (%)
ICV and ICA roots both located	74 (92.5%)
ICA located in the front of the ICV	43 (58.1%)
ICA located behind the ICV	31 (41.9%)
Accuracy in predicting the relationship between the ICA and ICV	72 (97.2%)
Location of the GTH relative to the pancreas was determined	75 (93.7%)
Accuracy in predicting the GTH location	73 (97.33%)
MCA roots located	47 (58.75%)
Accuracy in predicting the MCA location	37 (78.72%)
MCV roots located	51 (63.75%)
Accuracy in predicting the MCV location	43 (84.31%)
ICV-GTH distance (mean $\pm$ SD)	4.28 $\pm$ 2.5 cm
IsSMA-rsSMV distance (mean $\pm$ SD)	2.21 $\pm$ 0.6 cm

the pancreas was found in 75 (93.7%) patients, and the accuracy was 97.33% (73/75). The ICV-GTH distance was measured in 73 (91.2%) patients, and the mean distance was  $4.28 \pm 2.5$  cm. The IsSMA-rsSMV distance was measured in 76 (95%) patients, and the mean distance was  $2.21 \pm 0.6$  cm (Table 2).

## Discussion

Right hemicolectomy can usually be performed through an open or laparoscopic approach. Some studies have shown that laparoscopic right hemicolectomy has some advantages over open hemicolectomy [21–23], but laparoscopic surgery requires a longer operative time and needs more practise [21, 24]. Therefore, it is necessary to understand the anatomical structure of and relationships within the operation area before laparoscopic right hemicolectomy, especially when performed with the CME procedure.

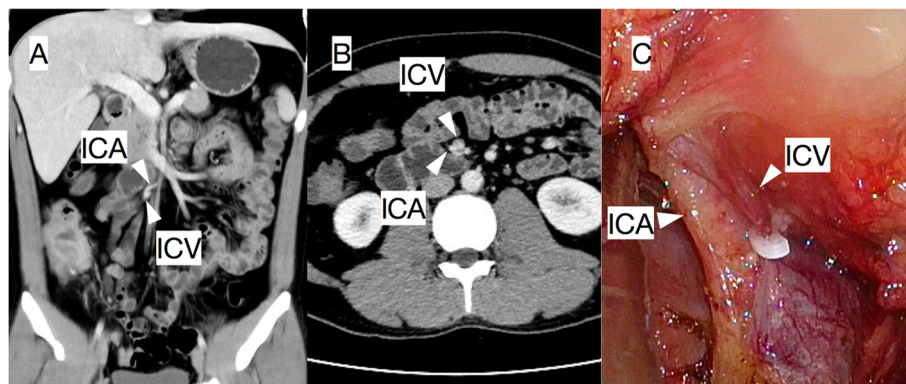
To perform right hemicolectomy with a central approach, surgeons usually need to find the ileocolic

vessels first, separate the ICV and ICA roots and then ligate them separately.

When performing CME with CVL, ligations of the ICV and right colic vein (if present) are performed along the right side of the SMV. When the cephalad side is dissected, the GTH will be encountered in most patients. In cases of unclear anatomy, intraoperative bleeding mostly results from damage to these vessels, especially the ICV and GTH, which might lead to massive bleeding.

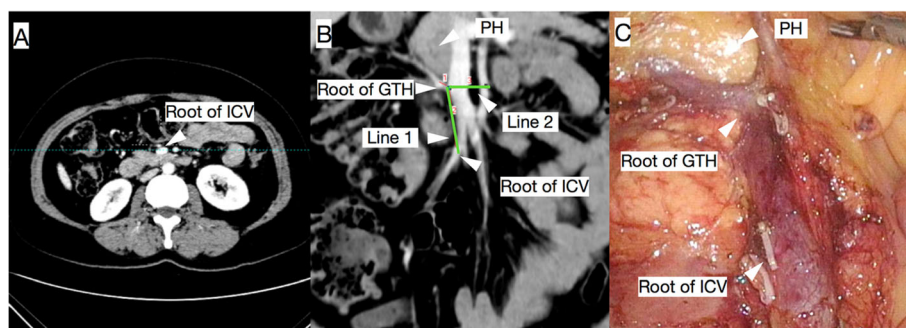
The left side of the SMA is the boundary in CME operations, and only when this margin is reached can sufficient lymph node dissection be achieved. However, in patients with a high BMI, it is difficult to determine the boundary because the main blood vessels are usually covered by thickened mesenteric adipose tissue.

As mentioned above, the key points of CME with CVL are to locate the roots of the ICV, ICA and GTH, the right side of the SMV and the left side of the SMA. Previous studies have reported CT-based vascular prediction techniques, but these lack accuracy comparisons



**Fig. 1** In a 34-year-old male patient whose ICA was behind the ICV, the anatomical relationship between the ICA and ICV was determined preoperatively by cross analysing the coronal (A) and axial images (B), and this relationship was confirmed by the intraoperative findings (C)





**Fig. 2** By analysing the axial (A) and coronal (B) MSCT images of a 49-year-old female patient, MSCT with coronal reconstruction was able to help locate the roots of the GTH and ICV, find the location of the pancreas head (PH) and measure the ICV-GTH distance (line 1). The anatomical relationship between these structures could be used for guidance during surgery (C)

[25] or require additional analysis techniques, such as CT angiography or colonography [26]. This study evaluated the accuracy of MSCT with coronal reconstruction in predicting critical anatomical sites, and this approach reduced the technical difficulties when used in practice.

Portal phase MSCT data were used for coronal reconstruction because these data can simultaneously show the central veins and arteries for right hemicolectomy, including the ICV, ICA, GTH, SMV and SMA. Preoperative visualisation of these vessels can be used to determine the extent of the CVL region during right hemicolectomy, whilst postoperative visualisation of these vessels can be used to assess the quality of CME [27].

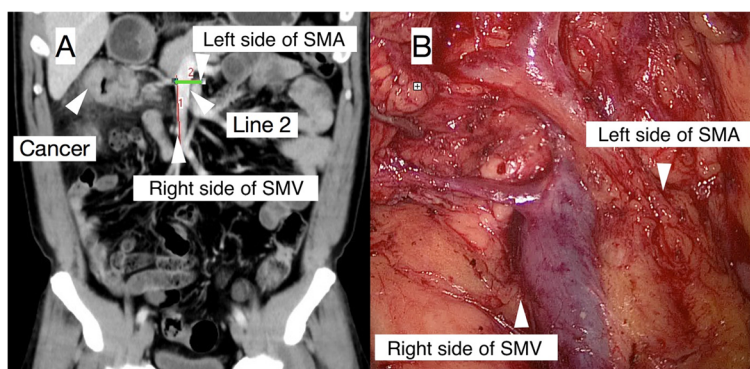
To determine the anatomical relationship between the ICV and ICA, as well as analyse the coronal reconstructed images, it is necessary to simultaneously examine both vessels on the axial images through the software's (Philips IntelliSpace Portal) positioning function to increase the accuracy (Fig. 1).

Because of the high accuracy in predicting the location of the ICV and ICA and the relationship between these vessels, this technique might be helpful in the initial stages of right hemicolectomy performed through the

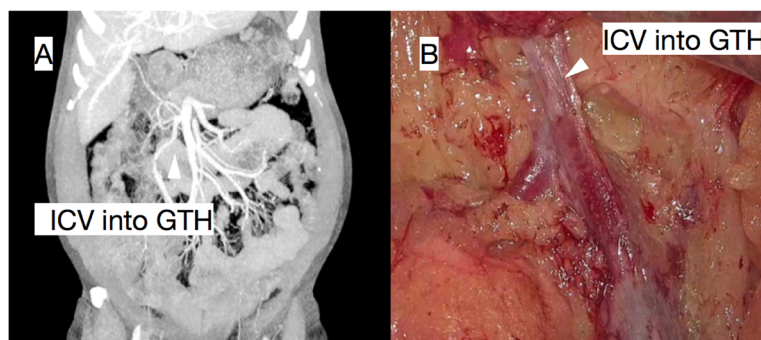
central approach. For example, if the ICA crosses behind the ICV, ligation and dissection of the ICA root must be carried out behind the SMV.

In this study, MSCT with coronal reconstruction located the GTH in 93.7% of patients, and the accuracy was 97.33%. After locating the roots of the ICV and GTH, the straight-line distance from the ICV root to the GTH root was also able to be measured with this technique (Fig. 2). These findings could help surgeons predict the operation route along the SMV and might reduce the occurrence of intraoperative vascular injury and bleeding [12].

Furthermore, by analysing the coronal reconstructed images, this technique could help locate the lsSMA and rsSMV and then measure the maximum distance between them (Fig. 3). Typically, when performing CME with CVL, dissection along the left side of the SMA is required, but locating this side during the operation can be challenging in some patients with a high BMI. As shown below, reconstructed coronal MSCT images could help to predict the border. By measuring the lsSMA-rsSMV and ICV-GTH distances; it was possible to estimate the CVL region size.



**Fig. 3** In a 42-year-old patient with hepatic flexure cancer, the left side of the SMA and the right side of the SMV were located on the coronal reconstruction (A), and the lsSMA-rsSMV distance (line 2) was measured, which was confirmed by the intraoperative findings (B)



**Fig. 4** In a 62-year-old male patient with proximal transverse colon cancer, the maximum intensity projection (MIP) reconstruction of the coronal plane (A) and intraoperative images (B) showed that the ICV directly flowed into the GTH

These measurements may be difficult to translate to the operative field of a laparoscopic procedure, and more studies are needed. The usefulness of these measurements in surgery differs amongst patients and surgeons. However, according to our experience, these measurements might be helpful in patients whose SMVs cannot be located at first glance during laparoscopic surgery.

Furthermore, coronal reconstruction might help surgeons detect important vascular and anatomical variations preoperatively, as shown in the following figure (Fig. 4), in which a patient's ICV flows directly into the GTH and, if it went unnoticed, may cause intraoperative injury or bleeding.

Compared with CT angiography, MSCT with coronal reconstruction conveys more information of perivascular anatomical sites, such as the pancreas, duodenum, tumour and lymph nodes. The relationship between these tissues can guide CME with CVL.

With the predicted information mentioned above, surgeons might be able to individualise the operation plan, predict the focus of the surgery and develop a more appropriate path, which might improve the efficiency of the operation and completion rate of CME and reduce the risk of intraoperative injury or bleeding. Of course, this still needs to be demonstrated by prospective studies.

This technology is also cost-effective. Patients only need conventional abdominal contrast-enhanced MSCT scans without additional CT angiography, making this technology more suitable for clinical application, especially for hospitals restricted in equipment or technology and for patients who are afraid of increasing the radiation dose they receive.

However, this study also found that this technique was not suitable for locating the middle colic vessels due to a low detection rate, mainly because these vessels were too small to be detected by conventional enhanced MSCT scans.

In addition, the right colic vessels and superior right colic vessels were not included in this study because if

the right side of the SMV and the roots of the ICV and GTH were successfully located, it would relatively be easy to find the right colic vessels and superior right colic vessels when dissecting along the right side of the SMV and between the roots.

## Conclusions

MSCT with coronal reconstruction can locate the roots of the ICV, ICA and GTH, predict the SMA and SMV boundaries, enable analysis of the anatomical relationship between these vessels and estimate the range and size of the CVL region. MSCT has limited detection of the vascular anatomy of the middle colic vessels. With its satisfactory accuracy in predicting and visualising information of key anatomical sites, this technology is of some predictive value for CME with CVL in right hemicolectomy. We recommend that this technique be performed as a routine preoperative workup, if possible.

## Abbreviations

CME: Complete mesocolic excision; CVL: Central vascular ligation; MSCT: Multi-slice spiral computed tomography; ICV: Ileocolic vein; ICA: Ileocolic artery; GTH: Gastrocolic trunk of Henle; ICV-GTH distance: Distance from the ICV root to the GTH root; IsSMA-rSMV distance: Maximum distance from the left side of the superior mesenteric artery to the right side of the superior mesenteric vein; PH: Pancreas head; MDCT: Multidetector computed tomography; 3D-CT: Three-dimensional CT; BMI: Body mass index

## Acknowledgements

We thank the patients enrolled in this study. Special thanks to Dr. Surong Hua, Dr. Youping Xiao and Mr. Minfeng Li.

## Authors' contributions

Guarantor of the integrity of the entire study: Hui Yu. Study design: Hui Yu; Chunkang Yang. Implementation of the research: Hui Yu; Yong Zhuang; Jinliang Jian. Data and statistical analysis: Jinliang Jian; Yong Zhuang. Manuscript writing: Hui Yu. The authors read and approved the final manuscript.

## Funding

This study and submission were not funded.

## Availability of data and materials

All data generated or analysed during this study are included in this published article.

## Declarations

### Ethics approval and consent to participate

The retrospective study was approved by the ethics committee of Fujian Cancer Hospital & Fujian Medical University Cancer Hospital (ethical approval number: K2020-035-01), and consent for participation was exempted by the ethics committee.

### Consent for publication

The ethics committee agreed that this retrospective study could be carried out and published without the patients' consent because this study and the paper for publication did not involve the patients' personal privacy information, and there was no contact with the patients during the study.

### Competing interests

The authors declare that they have no competing interests.

Received: 27 January 2021 Accepted: 17 June 2021

Published online: 28 June 2021

## References

- Hohenberger W, Weber K, Matzel K, Papadopoulos T, Merkel S. Standardized surgery for colonic cancer: complete mesocolic excision and central ligation—technical notes and outcome. *Colorectal Dis.* 2009;11(4):354–64; discussion 64–5. <https://doi.org/10.1111/j.1463-1318.2008.01735.x>.
- Bertelsen C, Neuenschwander A, Jansen J, Wilhelmsen M, Kirkegaard-Klitbo A, Tenma J, et al. Disease-free survival after complete mesocolic excision compared with conventional colon cancer surgery: a retrospective, population-based study. *Lancet Oncol.* 2015;16(2):161–8. [https://doi.org/10.1016/S1470-2045\(14\)71168-4](https://doi.org/10.1016/S1470-2045(14)71168-4).
- Merkel S, Weber K, Matzel KE, Agaimy A, Göhl J, Hohenberger W. Prognosis of patients with colonic carcinoma before, during and after implementation of complete mesocolic excision. *Br J Surg.* 2016;103(9):1220–9. <https://doi.org/10.1002/bjs.10183>.
- Gao Z, Wang C, Cui Y, Shen Z, Jiang K, Shen D, et al. Efficacy and safety of complete mesocolic excision in patients with colon cancer: three-year results from a prospective, nonrandomized, double-blind, controlled trial. *Ann Surg.* 2020;271(3):519–26. <https://doi.org/10.1097/SLA.00000000000003012>.
- Toyota S, Ohta H, Anazawa S. Rationale for extent of lymph node dissection for right colon cancer. *Dis Colon Rectum.* 1995;38(7):705–11. <https://doi.org/10.1007/BF02048026>.
- Hashiguchi Y, Muro K, Saito Y, Ito Y, Ajioka Y, Hamaguchi T, et al. Japanese Society for Cancer of the Colon and Rectum (JSCCR) guidelines 2019 for the treatment of colorectal cancer. *Int J Clin Oncol.* 2020;25(1):1–42. <https://doi.org/10.1007/s10147-019-01485-z>.
- Kobayashi H, West NP. CME versus D3 dissection for colon cancer. *Clin Colon Rectal Surg.* 2020;33(6):344–8. <https://doi.org/10.1055/s-0040-1714237>.
- Wu C, Ye K, Wu Y, Chen Q, Xu J, Lin J, et al. Variations in right colic vascular anatomy observed during laparoscopic right colectomy. *World J Surg Oncol.* 2019;17(1):16. <https://doi.org/10.1186/s12957-019-1561-4>.
- Lee SJ, Park SC, Kim MJ, Sohn DK, Oh JH. Vascular anatomy in laparoscopic colectomy for right colon cancer. *Dis Colon Rectum.* 2016;59(8):718–24. <https://doi.org/10.1097/DCR.0000000000000636>.
- Negoi I, Beuran M, Hostiuc S, Negoi RI, Inoue Y. Surgical anatomy of the superior mesenteric vessels related to colon and pancreatic surgery: a systematic review and meta-analysis. *Sci Rep.* 2018;8(1):4184. <https://doi.org/10.1038/s41598-018-22641-x>.
- Gao Y, Lu Y. Variations of gastroduodenal trunk of Henle and its significance in gastroduodenal surgery. *Gastroenterol Res Pract.* 2018;2018:3573680.
- Willard CD, Kjaestad E, Stimec BV, Edwin B, Ignjatovic D. Preoperative anatomical road mapping reduces variability of operating time, estimated blood loss, and lymph node yield in right colectomy with extended D3 mesenterectomy for cancer. *Int J Colorectal Dis.* 2019;34(1):151–60. <https://doi.org/10.1007/s00384-018-3177-5>.
- Xu L, Su X, He Z, Zhang C, Lu J, Zhang G, et al. Short-term outcomes of complete mesocolic excision versus D2 dissection in patients undergoing laparoscopic colectomy for right colon cancer (RELARC): a randomised, controlled, phase 3, superiority trial. *Lancet Oncol.* 2021;22(3):391–401. [https://doi.org/10.1016/S1470-2045\(20\)30685-9](https://doi.org/10.1016/S1470-2045(20)30685-9).
- Zhou Y, Han Z, Dou F, Yan T. Pre-colectomy location and TNM staging of colon cancer by the computed tomography colonography: a diagnostic performance study. *World J Surg Oncol.* 2021;19(1):120. <https://doi.org/10.1186/s12957-021-02215-4>.
- Kumamoto T, Shindoh J, Mita H, Fujii Y, Mihara Y, Takahashi M, et al. Optimal diagnostic method using multidetector-row computed tomography for predicting lymph node metastasis in colorectal cancer. *World J Surg Oncol.* 2019;17(1):39. <https://doi.org/10.1186/s12957-019-1583-y>.
- Nesgaard JM, Stimec BV, Bakka AO, Edwin B, Ignjatovic D. group RCCs. Navigating the mesentery: a comparative pre- and per-operative visualization of the vascular anatomy. *Colorectal Dis.* 2015;17(9):810–8. <https://doi.org/10.1111/codi.13003>.
- Spasojevic M, Stimec BV, Fasel JF, Terraz S, Ignjatovic D. 3D relations between right colon arteries and the superior mesenteric vein: a preliminary study with multidetector computed tomography. *Surg Endosc.* 2011;25(6):1883–6. <https://doi.org/10.1007/s00464-010-1480-5>.
- Romano S, Romano L. Utilization patterns of multidetector computed tomography in elective and emergency conditions: indications, exposure risk, and diagnostic gain. *Semin Ultrasound CT MR.* 2010;31(1):53–6. <https://doi.org/10.1053/j.sult.2009.10.002>.
- Smith CL, Horton KM, Fishman EK. Mesenteric CT angiography: a discussion of techniques and selected applications. *Tech Vasc Interv Radiol.* 2006;9(4):150–5. <https://doi.org/10.1053/j.tvir.2007.03.002>.
- Amin MB, Edge SB, Greene FL, et al. AJCC Cancer Staging Manual. 8th ed. New York: Springer; 2016.
- Anania G, Arezzo A, Davies RJ, et al. A global systematic review and meta-analysis on laparoscopic vs open right hemicolectomy with complete mesocolic excision [published online ahead of print, 2021 Mar 1]. *Int J Colorectal Dis.* 2021;10:1007.
- Shin JK, Kim HC, Lee WY, Yun SH, Cho YB, Huh JW, et al. Laparoscopic modified mesocolic excision with central vascular ligation in right-sided colon cancer shows better short- and long-term outcomes compared with the open approach in propensity score analysis. *Surg Endosc.* 2018;32(6):2721–31. <https://doi.org/10.1007/s00464-017-5970-6>.
- Park SS, Lee JS, Park HC, et al. Favorable short-term oncologic outcomes following laparoscopic surgery for small T4 colon cancer: a multicenter comparative study. *World J Surg Oncol.* 2020;18(1):299. <https://doi.org/10.1186/s12957-020-02074-5>.
- Kazama K, Numata M, Aoyama T, Atsumi Y, Tamagawa H, Godai T, et al. Does the endoscopic surgical skill qualification system improve patients' outcome following laparoscopic surgery for colon cancer? A multicentre, retrospective analysis with propensity score matching. *World J Surg Oncol.* 2021;19(1):53. <https://doi.org/10.1186/s12957-021-02155-z>.
- Bates DDB, Paroder V, Lall C, Lalwani N, Widmar M, Garcia-Aguilar J. Complete mesocolic excision and central vascular ligation for right colon cancer: an introduction for abdominal radiologists. *Abdom Radiol (NY).* 2019;44(11):3518–26. <https://doi.org/10.1007/s00261-019-02037-9>.
- Bian L, Wu D, Chen Y, Zhang Z, Ni J, Zhang L, et al. Clinical value of multi-slice spiral CT angiography, colon imaging, and image fusion in the preoperative evaluation of laparoscopic complete mesocolic excision for right colon cancer: a prospective randomized trial. *J Gastrointest Surg.* 2020;24(12):2822–8. <https://doi.org/10.1007/s11605-019-04460-1>.
- Livadaru C, Morarasu S, Frunza TC, Ghitun FA, Paiu-Spiridon EF, Sava F, et al. Post-operative computed tomography scan - reliable tool for quality assessment of complete mesocolic excision. *World J Gastrointest Oncol.* 2019;11(3):208–26. <https://doi.org/10.4251/wjgo.v11.i3.208>.

## Publisher's Note

Springer Nature remains neutral with regard to jurisdictional claims in published maps and institutional affiliations.