

Case report

Open Access

Three synchronous primary carcinomas in a patient with HNPCC associated with a novel germline mutation in *MLH1*: Case report

Cristian D Valenzuela¹, Harvey G Moore*¹, William C Huang², Elsa W Reich³, Herman Yee⁴, Harry Ostrer³ and H Leon Pachter¹

Address: ¹Department of Surgery, NYU Langone Medical Center, New York, USA, ²Department of Urology, NYU Langone Medical Center, New York, USA, ³Human Genetics Program, NYU Langone Medical Center, New York, USA and ⁴Department of Pathology, NYU Langone Medical Center, New York, USA

Email: Cristian D Valenzuela - cristian.valenzuela@nyumc.org; Harvey G Moore* - harvey.moore@nyumc.org; William C Huang - william.huang@nyumc.org; Elsa W Reich - elsa.reich@nyumc.org; Herman Yee - herman.yee@nyumc.org; Harry Ostrer - harry.ostrer@nyumc.org; H Leon Pachter - leon.pachter@nyumc.org

* Corresponding author

Published: 8 December 2009

Received: 25 September 2009

World Journal of Surgical Oncology 2009, 7:94 doi:10.1186/1477-7819-7-94

Accepted: 8 December 2009

This article is available from: <http://www.wjso.com/content/7/1/94>

© 2009 Valenzuela et al; licensee BioMed Central Ltd.

This is an Open Access article distributed under the terms of the Creative Commons Attribution License (<http://creativecommons.org/licenses/by/2.0>), which permits unrestricted use, distribution, and reproduction in any medium, provided the original work is properly cited.

Abstract

Background: *MLH1* is one of six known genes responsible for DNA mismatch repair (MMR), whose inactivation leads to HNPCC. It is important to develop genotype-phenotype correlations for HNPCC, as is being done for other hereditary cancer syndromes, in order to guide surveillance and treatment strategies in the future.

Case presentation: We report a 47 year-old male with hereditary nonpolyposis colorectal cancer (HNPCC) associated with a novel germline mutation in *MLH1*. This patient expressed a rare and severe phenotype characterized by three synchronous primary carcinomas: ascending and splenic flexure colon adenocarcinomas, and ureteral carcinoma. Ureteral neoplasms in HNPCC are most often associated with mutations in *MSH2* and rarely with mutations in *MLH1*. The reported mutation is a two base pair insertion into exon 10 (c.866_867insCA), which results in a premature stop codon.

Conclusion: Our case demonstrates that HNPCC patients with *MLH1* mutations are also at risk for ureteral neoplasms, and therefore urological surveillance is essential. This case adds to the growing list of disease-causing MMR mutations, and contributes to the development of genotype-phenotype correlations essential for assessing individual cancer risk and tailoring of optimal surveillance strategies. Additionally, our case draws attention to limitations of the Amsterdam Criteria and the need to maintain a high index of suspicion when newly diagnosed colorectal cancer meets the Bethesda Criteria. Establishment of the diagnosis is the crucial first step in initiating appropriate surveillance for colorectal cancer and other HNPCC-associated tumors in at-risk individuals.

Background

Colorectal cancer (CRC) is currently the third leading cause of cancer and cancer-related deaths in the United

States, estimated to be responsible for 10% of new cancer cases and 9% of cancer deaths in 2008 [1]. Hereditary nonpolyposis colorectal cancer (HNPCC), or Lynch syn-

drome, is the most common heritable CRC syndrome [2], accounting for approximately 5% of all CRC cases. Transmitted in an autosomal dominant fashion, HNPCC is associated with tumorigenesis caused by mutations in one of several genes involved in DNA mismatch repair (MMR) [3]. About 90% of HNPCC cases are associated with mutations in *MLH1* (OMIM #120436) or *MSH2* (OMIM #609309), and others are associated with mutations in *MSH6*, *PMS1*, *PMS2*, and *MLH3* [4]. Reported MMR mutations have been catalogued in three online databases that document the full spectrum of mutations and phenotypes associated with HNPCC [5-7].

In HNPCC, as in various other cancer syndromes, a somatic mutation or epigenetic event is needed as the "second hit" to disable the functional, wild-type allele [8]. Abolition of MMR raises the basal rate of mutation and leads to microsatellite instability (MSI), a tissue marker of defective mismatch repair [9]. This increased level of mutagenesis is most likely to affect tissues that undergo a high rate of cell division, such as the colonic epithelium [10]. Carriers of MMR mutations have up to an 82% lifetime risk of developing CRC [11,12]. Aside from demonstrating an MMR mutation, patients may be clinically diagnosed with HNPCC if their family cancer history meets the Amsterdam Criteria II, which encompasses CRC and associated extracolonic sites [13].

HNPCC also carries the risk of developing cancer at various other sites. The most clinically significant extracolonic cancer associated with HNPCC is endometrial cancer, for

which women have a 60% lifetime risk [11]. Compared to the general population, patients with HNPCC are 14-fold more likely to develop urothelial cell carcinoma of the upper urinary tract, corresponding to a cumulative lifetime risk of 2.6%-4.0% [11,14]. We report the case of a 47-year old man with a rare presentation of two distinct colorectal adenocarcinomas and a synchronous ureteral neoplasm. A definitive diagnosis of HNPCC was only established post-operatively following identification of a not previously reported germline mutation in *MLH1*.

Case presentation

A 47-year old man of Puerto Rican descent presented with recent gross hematuria and a history of lower abdominal pain of 1-2 years duration. Other comorbidities included hypertension and Type II diabetes mellitus. He had a 20-year history of heavy smoking. Colonoscopy three years prior to presentation revealed no evidence of adenomatous polyps or colorectal cancer.

Urine cytology revealed the presence of numerous red blood cells, as well as atypical urothelial cells. A subsequent CT scan revealed a mass in the mid-right ureter suggestive of a ureteral neoplasm (Fig. 1a). A ureteroscopic biopsy revealed urothelial mucosa with papillary architecture, suspicious for invasive urothelial cell carcinoma. Subsequent colonoscopy revealed synchronous tumors in the ascending colon and splenic flexure (Fig. 1a, b), and biopsies confirmed both lesions were adenocarcinomas. A two-centimeter flat lesion was also identified in the

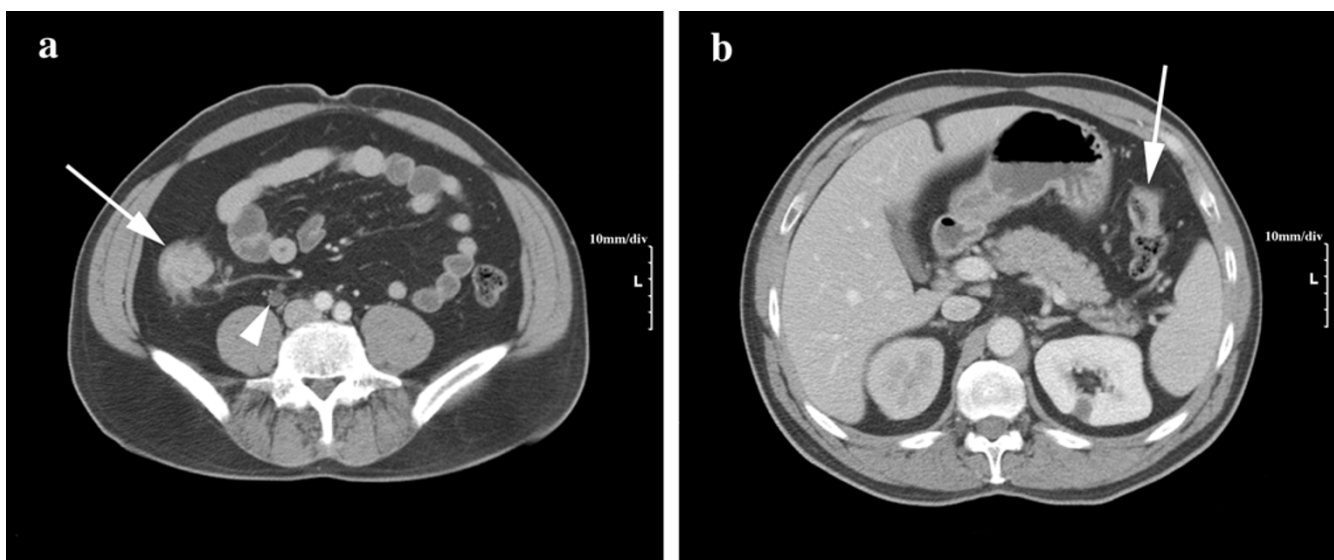


Figure 1

(a) CT scan with PO/IV contrast suggested a large tumor of the ascending colon (arrow). Enlarged pericolic lymph nodes are suggestive of metastases. Also shown is right-sided hydronephrosis caused by the mid-ureteral tumor (arrowhead). **(b) The colon tumor at the splenic flexure tumor is visible on a different cut (arrow).**

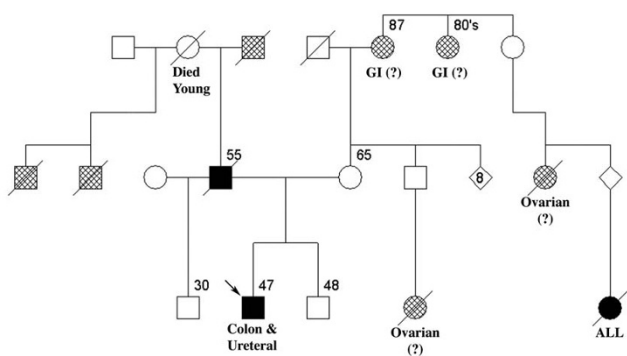


Figure 2
The patient (proband) is indicated by an arrow. Age of diagnosis or death is indicated if known. Diamonds indicate a group of siblings of unknown sex. Solid boxes indicate a diagnosis of colon cancer, and crosshatched boxes indicate cancer of non-colorectal origin. A diagonal strikethrough indicates a deceased individual. Unconfirmed diagnoses of individuals with extracolonic cancer are noted. Unaffected members of the extended family have been omitted for conciseness. One family member died in childhood from acute lymphoblastic leukemia (ALL).

transverse colon, and biopsy was consistent with a flat adenoma with focal high-grade dysplasia.

The three tumors were resected in a combined operation, and the patient recovered from surgery without complication. The urothelial cell carcinoma was high-grade, pT3 N2 Mx, Stage IV, and the more advanced colon adenocarcinoma was moderately differentiated, pT3 N1 Mx, Stage IIIB. The patient received adjuvant chemotherapy consisting of cisplatin and taxol combined with radiotherapy, and is disease-free at the time of publication.

A comprehensive family history was taken and a formal pedigree was assembled (Fig. 2). The patient's father died of colon cancer shortly after diagnosis at age 55, and three other paternal family members had cancer in an unknown site. The patient's paternal grandmother died at an early age of unknown causes. Four maternal family members had cancer in unconfirmed sites, and one had acute lymphoblastic leukemia.

Although the patient's family history did not satisfy Amsterdam Criteria II, the early age-of-onset and presence of synchronous tumors fulfilled the Revised Bethesda Criteria [15]. Immunohistochemistry (IHC) on surgical specimens was as follows: MLH1 stained negative and MSH2 stained positive in all tumors (Fig. 3), strongly suggesting a mutation in *MLH1*. Differential staining for cytokeratins 7 and 20 confirmed distinct histological origin of the ureteral and colon tumors (Fig. 3). Accordingly, the patient

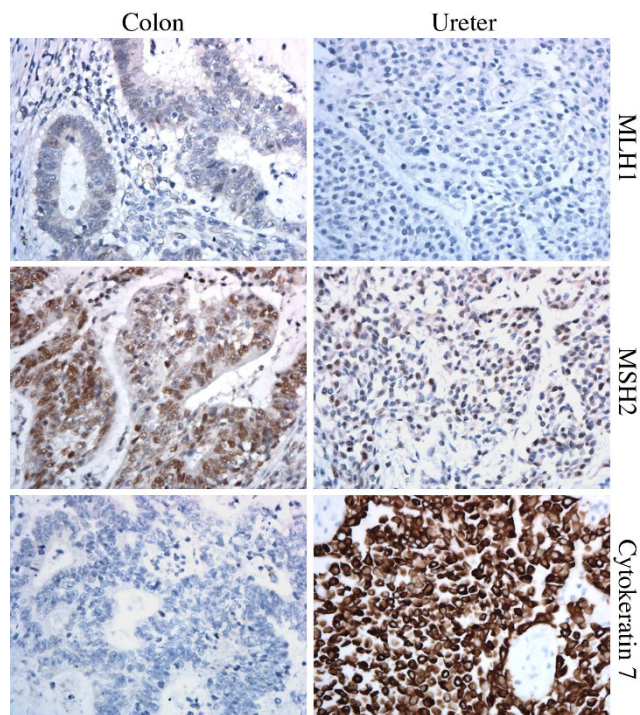


Figure 3
Three immunohistochemical stains (40x) from the patient's ureteral tumor and a selected colon tumor. The colon and ureteral cancers stained negative for MLH1 and positive for MSH2. Both colon tumors stained negative for cytokeratin 7 and positive for cytokeratin 20, whereas the ureteral tumor stained positive for both cytokeratins, demonstrating a distinct organ of origin for each tumor type and thus discounting the possibility that either tumor type is a metastasis of the other. Data not shown for positive controls.

was referred for genetic counseling and germline mutation testing.

PCR amplification and sequencing on a peripheral blood sample identified the novel c.866_867insCA *MLH1* insertion into exon 10 (Fig. 4). This frameshift mutation is predicted to produce a truncated, nonfunctional protein product due to a premature stop codon within exon 10 at amino acid residue 297. Review of the available databases revealed this specific mutation had not been previously reported.

Discussion

There are at least 2200 total variants in the six known MMR genes, with at least 323 of these reported to be disease-causing [6]. However, unlike familial adenomatous polyposis, very little is known about phenotypic variation as a function of the MMR gene involved or the location and nature of the specific MMR gene mutation. Hence, it

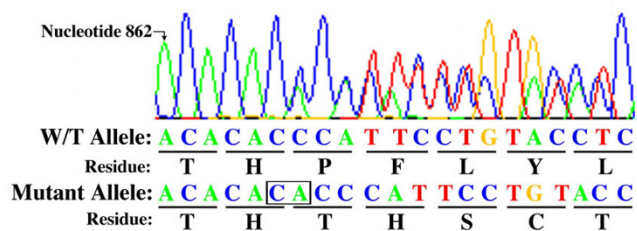


Figure 4
Sequence data pertaining to the novel *MLH1* mutation found in the proband. A two-nucleotide 5'-CA-3' insertion (box) between base pair positions 866 and 867 leads to nonsense coding of amino acid residues and predicted truncation of the protein product (c.866_867insCA). Note: due to the palindromic nature of the insertion site, the insertion may also be classified as a 5'-AC-3' insertion between base pairs 867 and 868.

is important to report novel MMR mutations in order to develop genotype-phenotype correlations and add to the mutation databases that serve as a reference for genetic diagnosis.

The history of CRC in the patient's father suggests paternal origin of the *MLH1* mutation. However, the origin of this mutation cannot be definitively determined, given that affected paternal family members are deceased and that the patient's mother declined genetic testing. Furthermore, it remains possible that a *de novo* mutation may have occurred in the proband. Nevertheless, the patient's at-risk siblings have been advised to undergo colonoscopy, evaluation of the upper urinary tracts and to seek genetic counseling.

The American Cancer Society (ACS) recommends annual or biennial colonoscopy for patients diagnosed with HNPCC by clinical criteria or genetic testing [16]. This patient's family history did not fulfill Amsterdam Criteria, and he was therefore not categorized as having HNPCC, but rather as having increased risk for CRC given a first-degree relative affected by CRC at age < 60. Thus, the patient followed the appropriate ACS screening guidelines: colonoscopy every 5 years starting at age 40. Although the revised criteria (Amsterdam Criteria II) are very specific and more sensitive than the original Amsterdam Criteria, there are still a substantial number of mutation-positive cases in which the family cancer history does not satisfy either set of Amsterdam Criteria. Limitations to obtaining an accurate family history include unavailability of original patient records, unrecognized infidelity within the family, and inaccurate patient recall. Indeed, a recent prospective population-based study found that CRC patients being evaluated for HNPCC using the Amsterdam Criteria were considerably inaccurate when

recalling malignancies of family members: false-negative and false-positive rates were 39% and 21%, respectively [17]. This case illustrates the consequences of failing to recognize a hereditary CRC syndrome, despite following appropriate surveillance guidelines. Thus, recognition of newly diagnosed CRC patients that meet Bethesda Criteria should lead to evaluation with IHC and MSI testing of the tumor, as well as possible germline testing, despite a family history that does not satisfy Amsterdam Criteria. If a diagnosis of HNPCC is established, at-risk family members can be offered genetic testing and begin appropriate surveillance for HNPCC-associated tumors.

HNPCC patients have an elevated lifetime risk (approximately 3-4%) of upper urinary tract carcinoma [11,14,18]. A recent Dutch study found that patients with *MSH2* mutations have a significantly higher risk of upper urinary tract cancer (12% by age 70, $P = < 0.05$) compared to patients with *MLH1* mutations, who did not have an increased risk compared to the general population [19]. Similarly, a British study reported 13 ureteral cancers in 130 HNPCC patients; all were associated with *MSH2* mutations [20]. In a Danish study, 11 of 12 ureteral cancers were attributable to *MSH2* mutations (one was associated with a *MLH1* mutation) [21]. Taken together, these studies suggest that the risk of ureteral cancer is elevated in patients with *MSH2* mutations. Our case highlights the fact that ureteral cancer is also possible in individuals harboring *MLH1* mutations. Others have reported similar findings [18]. Further study is necessary to determine whether surveillance recommendations for urinary tract cancer in HNPCC should be stratified by the MMR gene involved.

Specific histological characteristics have been found for urothelial cell carcinomas associated with HNPCC. Papillary architecture in urothelial cell carcinoma has a sensitivity and specificity of 70% and 78%, respectively, for predicting MSI [22]. Furthermore, IHC staining detects the loss of an MMR protein in 78-87% of upper urothelial cancers with demonstrated MSI [23,24], most commonly *MSH2* and *MSH6* [25]. Consistent with our patient, in HNPCC patients with upper tract urothelial cancers staining negative for at least one MMR protein, extracolonic tumors nearly always demonstrated the same MMR staining profile [25].

Unfortunately, a satisfactory screening test for ureteral cancer does not currently exist. Although annual urine cytology is generally recommended for patients with HNPCC, this test was recently found to have indeterminate sensitivity (29%) for detecting urinary tract cancer in the setting of HNPCC [21]. In HNPCC kindreds with a history of ureteral cancer or high-risk mutations, more aggressive screening may be indicated. In these patients,

routine urinalysis and cytology may be combined with more contemporary methods of evaluating the upper urinary tract including cystoscopy-ureteroscopy, intravenous pyelography, ultrasonography, and CT or MR urography [14]. If suspicion of malignancy remains after cytology and imaging, FISH (fluorescence in situ-hybridization) assays may be useful: they can detect upper urothelial cell carcinomas with a sensitivity of 33% for Grade 1 and 100% for Grade 2 [26]. The two newly-approved commercial FISH assays promise to offer vast improvements over traditional cytology for detection of upper and lower urinary tract carcinomas of all grades [26].

Conclusion

In patients with a family history characterized by multiple cases of CRC or extracolonic HNPCC-associated tumors, the possibility of HNPCC must be considered so that appropriate surveillance of at-risk individuals can be instituted. Patients presenting with ureteral cancer, particularly when MSI or suggestive histology is present, should be referred for colonoscopy as well as genetic risk assessment and possible germline testing. Conversely, in patients with known HNPCC, ureteral cancer surveillance is essential. Urine cytology alone appears to be ineffective; accuracy may be improved with the addition of cross-sectional imaging, ureteroscopic evaluation and FISH analysis. Reporting of novel disease-causing mutations, including information about ethnicity, is important for establishing genotype-phenotype correlations. It is anticipated that well-defined genotype-phenotype correlations will facilitate tailoring of surveillance strategies in the future.

Consent

Written informed consent was obtained from the patient for publication of this case report and accompanying images. A copy of the written consent is available for review by the Editor-in-Chief of this journal.

Competing interests

The authors have no commercial or financial associations that might create a conflict of interest with the information presented in this manuscript.

Authors' contributions

CDV analyzed the data and wrote the first draft of the manuscript. HGM and HLP are attending surgeons who conceived the case report. WCH is the attending urologist who researched urologic tumors in HNPCC. EWR is the genetic counselor and HO is the medical geneticist who analyzed the patient's pedigree along with genetic sequencing data. HY is the attending pathologist who collected and prepared the histological figures. CDV, HGM, WCH, EWR, HY, HO, and HLP have been involved in drafting the manuscript and revising it critically for impor-

tant intellectual content. All authors have read and approved the final manuscript.

Acknowledgements

The authors thank Mark S. Hochberg for guidance and support, Mei X. Peng for technical assistance, and Melinda Kwan for advice on disease prevalence.

References

- Jemal A, Siegel R, Ward E, Hao Y, Xu J, Murray T, Thun MJ: **Cancer statistics, 2008**. *CA Cancer J Clin* 2008, **58**:71-96.
- Church J, Simmang C: **Practice parameters for the treatment of patients with dominantly inherited colorectal cancer (familial adenomatous polyposis and hereditary nonpolyposis colorectal cancer)**. *Dis Colon Rectum* 2003, **46**:1001-1012.
- Guillem JG, Moore HG: **Hereditary colorectal cancer and polyposis syndromes**. In *ACS Surgery: Principles and Practice. 2006 revised edition* Edited by: Souba WW, Fink MP, Jurkovich GJ. New York: Web MD Professional Publishing; 2006:562-572.
- Lynch HT, de la Chapelle A: **Hereditary colorectal cancer**. *N Engl J Med* 2003, **348**:919-932.
- Woods MO, Williams P, Careen A, Edwards L, Bartlett S, McLaughlin JR, Younghusband HB: **A new variant database for mismatch repair genes associated with Lynch syndrome**. *Hum Mut* 2007, **28**:669-673.
- InSiGHT: International Society for Gastrointestinal Hereditary Tumors, Mismatch Repair Mutation Database** [<http://www.insight-group.org>]
- MMR Gene Unclassified Variants Database** [<http://www.mmrv.info>]
- Kaz A, Kim YH, Dzieciatkowski S, Lynch H, Watson P, Kay Washington M, Lin L, Grady WM: **Evidence for the role of aberrant DNA methylation in the pathogenesis of Lynch syndrome adenomas**. *Int J Cancer* 2007, **120**:1922-1929.
- Southey MC, Jenkins MA, Mead L, Whitty J, Trivett M, Tesoriero AA, Smith LD, Jennings K, Grubb G, Royce SG, Walsh MD, Barker MA, Young JP, Jass JR, St John DJ, Macrae FA, Giles GG, Hopper JL: **Use of molecular tumor characteristics to prioritize mismatch repair gene testing in early-onset colorectal cancer**. *J Clin Oncol* 2005, **23**:6524-6532.
- Radtke F, Clevers H: **Self-renewal and cancer of the gut: Two sides of a coin**. *Science* 2005, **307**:1904-1909.
- Aarnio M, Sankila R, Pukkala E, Salovaara R, Aaltonen LA, de la Chapelle A, Peltomäki P, Mecklin JP, Järvinen HJ: **Cancer risk in mutation carriers of DNA-mismatch-repair genes**. *Int J Cancer* 1999, **81**:214-218.
- Barrow E, Alduaij W, Robinson L, Shenton A, Clancy T, Lalloo F, Hill J, Evans DG: **Colorectal cancer in HNPCC: Cumulative lifetime incidence, survival and tumour distribution. A report of 121 families with proven mutations**. *Clin Genet* 2008, **74**:233-242.
- Vasen HF, Watson P, Mecklin JP, Lynch HT: **New clinical criteria for hereditary nonpolyposis colorectal cancer (HNPCC, Lynch syndrome) proposed by the International Collaborative Group on HNPCC**. *Gastroenterology* 1999, **116**:1453-1456.
- Sijmons RH, Kiemeny LA, Witjes JA, Vasen HF: **Urinary tract cancer and hereditary nonpolyposis colorectal cancer: Risks and screening options**. *J Urol* 1998, **160**:466-470.
- Julié C, Trésallet C, Brouquet A, Vallot C, Zimmermann U, Mitry E, Radvanyi F, Rouleau E, Lidereau R, Coulet F, Olschwang S, Frébourg T, Rougier P, Nordlinger B, Laurent-Puig P, Penna C, Boileau C, Franc B, Muti C, Hofmann-Radvanyi H: **Identification in daily practice of patients with Lynch syndrome (hereditary nonpolyposis colorectal cancer): Revised Bethesda guidelines-based approach versus molecular screening**. *Am J Gastroenterol* 2008, **103**:2825-2835.
- Levin B, Lieberman DA, McFarland B, Andrews KS, Brooks D, Bond J, Dash C, Giardiello FM, Glick S, Johnson D, Johnson CD, Levin TR, Pickhardt PJ, Rex DK, Smith RA, Thorson A, Winawer SJ, American Cancer Society Colorectal Cancer Advisory Group US Multi-Society Task Force; American College of Radiology Colon Cancer Committee: **Screening and surveillance for the early detection of colorectal cancer and adenomatous polyps, 2008: A joint guideline from the American Cancer Society, the US Multi-**

- Society Task Force on Colorectal Cancer, and the American College of Radiology.** *Gastroenterology* 2008, **134**:1570-1595.
17. Katballe N, Juul S, Christensen M, Ørntoft TF, Wikman FP, Laurberg S: **Patient accuracy of reporting on hereditary non-polyposis colorectal cancer-related malignancy in family members.** *Br J Surg* 2001, **88**:1228-1233.
 18. Gylling AH, Nieminen TT, Abdel-Rahman WM, Nuorva K, Juhola M, Joensuu EI, Järvinen HJ, Mecklin JP, Aarnio M, Peltomäki PT: **Differential cancer predisposition in Lynch syndrome: Insights from molecular analysis of brain and urinary tract tumors.** *Carcinogenesis* 2008, **29**:1351-1359.
 19. Vasen HF, Stormorken A, Menko FH, Nagengast FM, Kleibeuker JH, Griffioen G, Taal BG, Moller P, Wijnen JT: **MSH2 mutation carriers are at higher risk of cancer than MLH1 mutation carriers: A study of hereditary nonpolyposis colorectal cancer families.** *J Clin Oncol* 2001, **19**:4074-4080.
 20. Geary J, Sasieni P, Houlston R, Izatt L, Eeles R, Payne SJ, Fisher S, Hodgson SV: **Gene-related cancer spectrum in families with hereditary non-polyposis colorectal cancer (HNPCC).** *Fam Cancer* 2008, **7**:163-172.
 21. Myrholm T, Andersen MB, Bernstein I: **Screening for urinary tract cancer with urine cytology in Lynch syndrome and familial colorectal cancer.** *Fam Cancer* 2008, **7**:303-307.
 22. Hartmann A, Dietmaier W, Hofstadter F, Burgart LJ, Chevillie JC, Blaszyk H: **Urothelial carcinoma of the upper urinary tract: Inverted growth pattern is predictive of microsatellite instability.** *Hum Pathol* 2003, **34**:222-227.
 23. Hartmann A, Zanardo L, Bocker-Edmonston T, Blaszyk H, Dietmaier W, Stoehr R, Chevillie JC, Junker K, Wieland W, Knuechel R, Rueschoff J, Hofstaedter F, Fishel R: **Frequent microsatellite instability in sporadic tumors of the upper urinary tract.** *Cancer Res* 2002, **62**:6796-6802.
 24. Catto JW, Azzouzi AR, Amira N, Rehman I, Feeley KM, Cross SS, Fromont G, Sibony M, Hamdy FC, Cussenot O, Meuth M: **Distinct patterns of microsatellite instability are seen in tumours of the urinary tract.** *Oncogene* 2003, **22**:8699-8706.
 25. Ericson KM, Isinger AP, Isfoss BL, Nilbert MC: **Low frequency of defective mismatch repair in a population-based series of upper urothelial carcinoma.** *BMC Cancer* 2005, **5**:23.
 26. Tetu B: **Diagnosis of urothelial carcinoma from urine.** *Mod Pathol* 2009, **22**(Suppl 2):53-59.

Publish with **BioMed Central** and every scientist can read your work free of charge

"BioMed Central will be the most significant development for disseminating the results of biomedical research in our lifetime."

Sir Paul Nurse, Cancer Research UK

Your research papers will be:

- available free of charge to the entire biomedical community
- peer reviewed and published immediately upon acceptance
- cited in PubMed and archived on PubMed Central
- yours — you keep the copyright

Submit your manuscript here:
http://www.biomedcentral.com/info/publishing_adv.asp

